

Issue No. 13

April 2018

The ASPE OC PRESS



President's Message

by Chris MacKnight
Page 2

ASPE Membership

American Society of Plumbing Engineers
Membership Application
Page 5

Technical Report

by Carl P Ludwig - VP Technical
Page 9

PRESIDENT'S MESSAGE

By Chris MacKnight

Hello All:

Happy April. Starting with the June meeting I have a surprise for the engineers. The first five engineers (in the chronological order that they email me) will be able to go to the separate raffle prize table at the end of the meeting first to pick out their raffle prize. So, make sure you read the newsletter each month. In the future I may put a hidden question in the newsletter that you must answer correctly first to claim your early spot in the line to choose a raffle prize.

2018 ASPE Convention & Expo registration opens on Monday!

In addition to our famous Expo and top-notch technical education program, this year we also are offering a Women of ASPE Leadership Forum and Care for a Cause with the Girl Scouts of Atlanta, a Green Plumbing Design workshop, a golf outing at Stone Mountain Golf Club, an ASPE Young Professionals networking social at Top Golf, and a reception for first-time attendees, among other exciting features. You can learn all about this year's event and register at expo.aspe.org. ASPE has secured discounted rates at the Hilton

PRESIDENT'S MESSAGE

Atlanta and the Omni Atlanta Hotel at CNN Center for 2018 Convention & Expo attendees, and you can reserve your room here starting April 16.

Women of ASPE scholarship will help a deserving member attend the 2018 Convention & Expo

WOA is accepting applications for a scholarship that will cover full registration to the Convention & Expo, any special events, roundtrip airfare, hotel accommodations, airport transportation, and meals, as well as a one-year membership renewal. To be eligible, an applicant must be an ASPE member in good standing and part of WOA. The guidelines and application can be found here.

New model shows how bacteria grow in plumbing systems

Rather than reproducing the conditions of a stagnant plumbing system within a lab setting, University of Illinois researchers sampled dormitory tap water before and after a school break to determine the extent of microbe growth inside in-premise pipes. [More>>](#)

Our membership is up to 107 as of the beginning of April. We

have two applicants pending which will take us to 109. Our goal was to get our membership up to 110 by June 30. Maybe we set our goal too low. Let's shoot for 115 members by June 30. Adding members (both affiliates and engineers) to our group adds a bigger knowledge base to our group, which benefits everyone. One of the reasons we hear that some engineers are not attending meetings is the lack of support from their employers. Please note that many of our affiliate members are willing to help sponsor memberships and even some meetings dues for engineers who would like to attend the Technical Meetings, and Saum Nour's classes each month prior to our Technical Meetings. Please pass this information on to all your colleagues.

Please contribute your ideas for meeting topics to Carl Ludwig (carl@ironwoodplumbing.com). Remember there is a prize worth \$50 to anyone coming up first with an idea for a speaker that we use.

I look forward to seeing you all on April 25.



The Moffat Group
Michael E. Moffat, President

17747 Creciente Way, Suite 8
San Diego, CA 92127-1056
858-451-2196 Office/Fax
858-245-2196 Mobile
tmg@san.rr.com
www.moffatgroup.com



ASCO
Firetrol
Fire Pump Controllers
www.firetrol.com



ENVIRO
PRODUCTS WEST

2029 Verdugo Blvd. #236
Montrose, CA 91020

Linda Deunay

linda@enviroproductswest.com

o. 888.959.2937x101
c. 818.687.6910
f. 888.959.2973

ENVIROPRODUCTSWEST.COM

ADVERTISE IN THE ASPE ORANGE COUNTY NEWSLETTER!

- Support your business
- Great way to network with people in your industry
- Support your local ASPE chapter

L O C A L C H A P T E R S A R E N O T A L L O W E D T O S P E A K F O R T H E S O C I E T Y !

NEWSLETTER SPONSORSHIP AGREEMENT

Sponsor's Name: _____,

Address: _____,

Contact Person: _____ Phone No.: _____, _____

Type of sponsorship selected:

(MONTHLY RATES)

Business Card (\$25) 1/4" Page (\$40) 1/2 Page (\$75) Full Page (\$115)

(YEARLY RATES)

Business Card (\$120) newsletter only Business Card (\$200) includes Sponsor page link

1/4" Page (\$250) 1/2 Page (\$450) Full Page (\$800)

Partial year sponsorship will be provided. Make checks payable to: **ASPE** at the above address. Sponsors must provide their own electronic artwork files (jpeg, gif, bmp etc..).

Sponsorship Signature: _____,

ASPE Signature: _____,



Delta-Q Inc.
 1851 Dawns Way
 Fullerton, CA 92831
 714-879-0622...Fax 714-879-0623
www.deltaginc.com

Manufacturer's Representatives of Pumps, Plumbing, HVAC, Luxury



Residential & Commercial High Quality
 Pumps and Pumping Systems
www.us.grundfos.com



Complete Line of Faucets and Fixtures,
 Residential and Commercial
www.americanstandard-us.com



Bath & Ventilation Fans, Range Hoods, Fresh Air Systems,
 Attic Ventilation, Trash Compactors
www.broan.com



Water Storage, Treatment, Heating,
 Expansion, & Flow Control
www.amtrol.com



Full Line of Water Filtration System and
 Filters, New and Replacement
www.falskenwatersystems.com



Bath & Ventilation Fans, Range Hoods, Intercom, Home
 Automation, Central Vac, Door Chimes
www.nutone.com



On Demand Hot Water
 Systems and Pump
 Controls

www.gothotwater.com



Water Soluble Flux, Tankless Clense Kits,
 Non Toxic Drain Cleaner
www.deltaginc.com



Gas Heating Equipment, Wholesale Only
www.cozyheaters.com



Sump, Sewage, Basins, Grinders and
 Packaged Pump Systems
www.cranepumps.com/brands/Barnes.php



Tubular, Angle Stops, Basket Strainers, ADA
 Grab Bars, Master Kits
www.keeneymfg.com



Tankless Elec Hot Water Solutions, Space
 Heating & Restroom Products
www.stiebel-eltron-usa.com



Professional Torch Equipment
www.gossonline.com



Durable Shower Solutions including Bases,
 Laundry Sinks, ADA Showers
www.fiatproducts.com



Radiant Heating and Cooling Systems
www.rehau.com/us-en/mechanical-and-plumbing



Thermostatic Mixing Valves Tempered
 Water Soutions
www.lawlervalue.com



Walk In Tubs for the Assisted Living Market
www.safetytubs.com



Industrial Instrumentation, Pressure
 Gauges, Thermometers
www.winters.com



Emergency Eyewash & Showering
 Valves
www.tepid.com



Food Waste Disposers, Insta Hot, Water
 Chillers
www.mountainplumbing.com

MEMBERSHIP APPLICATION
(Please Print or Type)



American Society of Plumbing Engineers

6400 Shafer Court, Suite 350 | Rosemont, IL 60018
(847) 296-0002 | Fax: (847) 296-2963 | www.aspe.org | aspehq@aspe.org

Chapter Use Only

H	
Q	
N	
O	
7	

Promo CODE: MBR2011

INCOMPLETE APPLICATIONS WILL NOT BE PROCESSED.

Mr. Ms. Miss Mrs.

First Name _____ (Nickname) _____ Middle Name _____ Last Name _____

Birth Date: M ___ /D ___ /Y ___ Check all that apply: P.E. P. Eng CPD Graduate Engineer LEED AP CET Other _____

I wish to affiliate with the _____ Chapter. Certification (P.E.) State _____ Certificate No. _____ Branch _____

Preferred Mailing Address RESIDENCE BUSINESS

RESIDENCE: Street Address _____ City _____ State _____ ZIP _____ Phone _____

E-mail (required) _____ Business E-mail _____ Cell Phone _____

BUSINESS: Organization Name _____ Your Title _____ Phone _____

Street Address _____ City _____ State _____ ZIP _____ Fax _____

Other organizations you are a member of: ASHRAE ASSE NFPA NSPE ASME PHCC ICC IAPMO SFPE Other _____

EDUCATION

	Name of Institution	Course or Major	From	To	Graduation Date	Degree/Diploma
High School						
College/University						
Technical School						
Others						

PROFESSIONAL EXPERIENCE

(This section must be completed as it affects membership grade classification. List chronologically, beginning with the present. Work description must be clear and concise: e.g., plumbing, piping, fire protection, HVAC, etc. Use additional sheet as necessary.)

Date(Mo/Yr)	Firm Name and Address	Class* (see below)	Title	Description of Work	Degree of Responsibility
From To					

*Classification of Firm A - Arch./Engr. or Cons. Engr. B - Govt. Agency C - Mfr. or Mfr's. Rep. D - Educ. Inst. E - Contractor F - Other (Explain)

REFERENCES

(References should be in engineering profession. ASPE members preferred. ASPE reserves the right to contact references.)

Name	Address	Telephone

PLUMBING ENGINEERING DESIGN HANDBOOK

New members receive one of four volumes of the this definitive collection of general plumbing practices. As an ASPE member you will be sent the CD-rom unless you indicate preference for the softcover edition. If you would like both the CD-rom and softcover editions, please add \$50 to your total to the right.

CD-ROM SOFTCOVER

RENEWAL REMINDER

I WOULD LIKE TO RECEIVE MEMBERSHIP RENEWAL REMINDERS AND SOCIETY RELATED IMPORTANT ANNOUNCEMENTS VIA TEXT MESSAGES.

CERTIFICATION BY APPLICANT

The undersigned certifies that all statements made herein are correct and, if elected to the Society, agrees to adhere to the Society's Bylaws and accept the Classification conferred by the Society. Upon becoming a member, the applicant will endeavor to advance the objectives of the Society and the plumbing engineering profession.

Signature of Applicant _____ Date _____

Sponsor _____ (Please Print)

How did you hear about ASPE? Past Member Plumbing Engineer Magazine Colleague/Employer ASPE App Website Other _____

American Society of Plumbing Engineers member dues are nonrefundable and not deductible as a charitable expense, but may be deductible as a business expense.

* Contributions to ASPE Education (create education programs for membership) and Alfred Steele Scholarship (to award college scholarships) and PE Curriculum/Licensing (create future curriculum and licensing opportunities for membership) Funds are Strictly Voluntary and are not deductible as a charitable contribution but may be deductible as an ordinary and necessary business expense.

** Contributions to the ASPE Research Foundation are Strictly Voluntary and are tax deductible as a charitable contribution.

© Copyright 2016 American Society of Plumbing Engineers. All Rights Reserved.

REMIT MEMBERSHIP DUES WITH APPLICATION

Member Type	Amount	Amount Due
<input type="checkbox"/> Full	\$190	\$ _____
<input type="checkbox"/> Associate	\$170	\$ _____
<input type="checkbox"/> Affiliate	\$190	\$ _____
<input type="checkbox"/> Special	\$190	\$ _____
<input type="checkbox"/> Governmental	\$190	\$ _____
<input type="checkbox"/> Student	\$30	\$ _____
<input type="checkbox"/> PEDH CD & Book	\$50	\$ _____
<input type="checkbox"/> ASPE Alfred Steele Scholarship Fund*	\$25	\$ _____
<input type="checkbox"/> ASPE Education Program Fund*	\$25	\$ _____
<input type="checkbox"/> PE Curriculum/Licensure Fund*	\$25	\$ _____
<input type="checkbox"/> ASPE Research Foundation**	\$25	\$ _____

TOTAL AMOUNT DUE \$ _____

Payment Information:

Enclosed is my check payable to ASPE.

Please charge my: Visa, MasterCard Discover

American Express

Card # _____

Exp Date: _____

Signature: _____

Date: _____ Telephone: _____

Plumbing Design Engineer's : Orange County, San Diego and San Jose available positions at all levels.

We are looking for a team players! We are looking for a motivated, team-oriented, collaborative leader to support the growth of our fast-developing Plumbing team. This person would play a key plumbing engineering group and would be responsible for delivery of technical engineering work.

Key Responsibilities: The Plumbing Engineer is responsible for performing complex design calculations, sketches, technical comparisons and similar technical work as required by assignment. Designs complete systems (e.g. water hot and cold systems, waste and vent, storm dvrainage, natural gas, fuel oil, controls, medical gases) for low through mid-rise projects. In addition, the engineer calculates and understands impacting issues in Title-24 compliance.

Typical Duties:

- Performs more complex design calculations, sketches, technical comparisons and similar technical work as required by assignment / direction by Project Manager.
- Performs coordination at a higher level by reviewing drawings supplied by vendors, other team engineers, and the architects and implements design modifications as necessary.
- Researches code issues as directed by the Project Manager.
- Researches design options and discuss findings with Project Managers.
- Proficiency in the use of 2D/3D software, including AutoCAD 2D, AutoCAD 3D, Revit, and Navisworks.
- Proficient computer skills with programs such as Word, Excel, PowerPoint, and Microsoft Project Experience performing site investigations of existing building system for renovation type projects.
- Visiting jobsites during construction phase and identifying and generally confirming the proper installation of designed systems and equipment.
- Communicating with and utilizing subordinates (e.g. CAD/BIM manual drafting and Design personnel) in the preparation and/or completion of design documents.
- Communicating with architects and other consultants regarding building systems and their impact on the system design.
- Communicating with building officials regarding code issues impacting system design.
- Begin to interact with clients as his or her level of experience progresses. May attend "kick-off" and design review meetings as directed by a Project Manager.
- Reviewing project budget cost and preparing opinions of probable construction costs.

Qualifications: Bachelor's Degree in Engineering or Related field is preferred.

- 5 - 7 years of project experience in Plumbing design.
- Experience with AutoCAD and Revit is required.
- Knowledge of California Plumbing Code and related California Building Codes.
- Knowledge of green building practices and LEED Rating System.
- LEED AP Certification is desired.
- Experience with healthcare plumbing systems and life science projects are desirable. (OSHPD)

Nancy Whitley

nwhitley@healthcaretalent.net

949-709-1883x 232



NewAge Casting

Welcome to the New Age.

Certified by



Welcome to the NewAge of Epoxy Soil Pipe

APPLICATIONS

Medical Facilities

Hospitals, Trauma Centers, Laboratories, Dialysis Clinics, Research Facilities

Enhanced DWV

Kitchens, Bars, Soda Machines, Grease Interceptors, Waterless Urinals, High Efficiency, Casinos

Destructive Elements & Environments

Maritime, Corrosive Soils, Rainwater, Boiler Rooms, Sustainable Buildings with waste volumes flowing from 20% to 50% less

High Occupancy Structures

High Rises, Malls, Shopping Centers, Schools, Colleges, Universities, Arenas, Stadiums, Theatres, Convention Centers, Office Complexes

Assisted Living Centers

Convalescent Homes, MOBs

COST

A cost effective alternative to CPVC, acid waste, glass pipe, duriron, & stainless steel. We offer a solution to existing pipe materials, sizes & specifications.

EPOXY COATING TESTING

1. Salt Spray
2. Chemical
3. High temperature waste testing
4. Temperature cycling testing
5. Flame resistant

INSTALLATION

Standard installation practices

PRODUCTS

No Hub from 1-1/2" to 15" & Couplings

SPECIFICATION & STANDARDS

ASTM - A888

CISPI 301

ASTM 1277, 1540 & C564 - Regular & HD Couplings

EN 877 Coating Specification & Testing

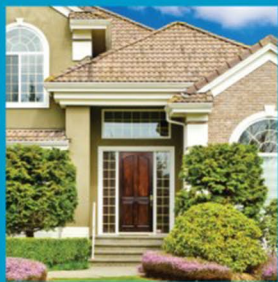


For the life of the building.

12630 West Airport Blvd. • Suite 100
Sugar Land, TX 77478 • Phone: (281)565-0928
Fax: (281)565-0929 • Email: info@NewAgeCasting.com

Toll Free: 1.866.791.7055 • NewAgeCasting.com





MORE INSIDE™ :: VALUE BEYOND OUR PIPING SOLUTIONS



For more than 50 years, The Lubrizol Corporation has been dedicated to providing quality resources with More Inside™ – helping you work more efficiently and effectively with all Lubrizol CPVC piping systems.

ASPE-AUTHORIZED CEU COURSES: Advance your expertise and improve your Certified Plumbing Design status.

3D BIM OBJECTS: Easily and accurately specify FlowGuard Gold® and Corzan® systems, the first CPVC systems available in BIM.

For your next project, specify Lubrizol CPVC systems, approved across California (including Los Angeles city), for use in residential and commercial applications.

Learn more about all of our innovative products and services at lubrizolcpvc.com or contact Rob Zagorski at rob.zagorski@lubrizol.com or 562.857.0755.

Follow us on Twitter at @LZ_CPVC.



TECHNICAL REPORT

By Carl Ludwig, VP Technical

Greetings,

Thank you to all who attended our last Technical Meeting on March 25th, 2018, we had a great turnout. I would like to thank Paul Schwartz, PE with the University of Southern California who gave an excellent presentation on backflow prevention.

Moving forward, we are extremely excited to announce that our next Technical Meeting will be on April 25th, 2018. The speaker will be Matthew Tucci, EIT with IPEX USA, LLC. Matthew will be presenting on the topic "Double Containment Piping System Design". Matthew received his Bachelor Degree in Industrial Chemical Engineering from Western University and is a certified Engineer In Training (E.I.T) working towards his professional designation. Since joining IPEX Matthew has been involved with thermoplastic piping applications and provided technical expertise for piping systems in the plumbing and industrial sectors. This is a great topic and we are certainly looking forward to hearing from Matthew.

For our tabletop presentation, we will have the privilege of hearing from Mario Orlando with Spears Manufacturing. He will be educating us on Plastic Ducting.

Please keep in mind, if anyone would like to reserve a tabletop presentation, please do not hesitate to let me, or anyone on the ASPE OC Board know. I can be reached by phone at 714-340-5114 or by e-mail at AmericanDrafter@gmail.com.

To help prepare Plumbing Engineers for the CPD test we will have Dr. Saum's - CPD Preparation Lecture - at 5:30pm. This is a Must-Attend-Event and we hope you can make it.

Look forward to seeing everyone on April 25th, 2018.

XERXES® GREASE INTERCEPTORS

IAPMO models to 30,000 gallons
30 Year Warranty



ENVIRO
PRODUCTSWEST

2029 Verdugo Blvd., #236
Montrose, CA 91020
tel: 888.959.2937

www.enviroproductswest.com



YEARS OF EXCELLENCE

MC MUIR-CHASE
PLUMBING CO.

p2s®

P2S Engineering is proud
to support ASPE-OC

JOIN OUR TEAM!

We are currently hiring engineers in our Long Beach and San Diego offices. For more information please visit our website at p2seng.com

MECHANICAL | ELECTRICAL | PLUMBING
TECHNOLOGY | COMMISSIONING | ENERGY

5000 East Spring Street, 8th Floor
Long Beach, CA 90815

www.p2seng.com

ENVIRO
PRODUCTSWEST

2029 Verdugo Blvd. #236
Montrose, CA 91020

John Deunay, CPD

john@enviroproductswest.com

o. 888.959.2937 x302
c. 818.687.6911
f. 888.959.2973

ENVIROPRODUCTSWEST.COM

DELCO  SALES

Chris Nicosia, CPMR
CEO

5375 E. Hunter Avenue • Anaheim, CA 92807
Phone: 714-888-2444 • Fax: 714-888-2448
Cell: 714-273-5413 • cnicosia@delcosales.com
www.delcosales.com

Your Premier Providers of Life, Property and Asset Protection Solutions

CLEAN AGENT FIRE SUPPRESSION

Our fire protection specialists bring you the finest in fire protection, including the most cost effective to the most environmentally green products available. Fike's **ECARO-25**® (using DuPont™ FE-25™ as the fire-extinguishing agent) is the best, most cost-effective clean agent system available. We offer a full line of leading-edge systems for a variety of applications:

- Cost-Effective Clean Agent Systems
- Green Inert Gas Systems
- Drop-in Halon Replacement
- In Cabinet / Small-Space Protection
- CO₂ Systems



FIRE ALARM AND LIFE SAFETY

Our code-compliant fire alarm systems with specialty detection utilize high quality equipment from industry-leading manufacturers. We have extensive experience in projects from small commercial buildings, to large high-rise facilities, to sprawling industrial complexes. Our NICET certified sales team, designers, project managers, and technicians strive to exceed our client expectations.



- Addressable, Conventional, and Networked Fire Alarm Systems
- Voice Evacuation
- Linear Heat Detection
- Air Sampling
- Pre-action Sprinkler Detection & Control



EMERGENCY POWER SHUTDOWN MANAGEMENT SYSTEM (EPSMS)

Fike's Emergency Power Shutdown Management System (EPSMS) is designed to consolidate and control equipment emergency power off in a timely, efficient and coordinated manner. EPSMS is used in many applications to:

- De-energize equipment during a fire
- Close fire dampers and turn off HVAC to contain fire and maintain proper concentration of fire suppressant
- Safely shutdown equipment during a flood or sprinkler system discharge
- Help protect fire department personnel from electrocution when fighting a fire



Call today for your life safety evaluation.



FACILITIES PROTECTION SYSTEMS

714-257-2244

www.fpsys.com



925-484-3701

www.gotoitsi.com

ASPE OC ADMINISTRATIVE SECRETARY REPORT

By Jim Weil, Administrative Secretary

**ASPE OC Administrative Secretary Report
Board of Directors Meeting March 28, 2018**

Called to order by President Chris McKnight at 4:17 PM.

Present for the meeting: Chris MacKnight - President, Bob Woods - Treasurer, Saum Noor - VP Legislative, Jim Weil - Administrative Secretary, Ira Schumer, Carl Ludwig - VP Technical, and Roland Gutierrez - Corresponding Secretary.

First item of discussion was Revit classes. Chris asked when people would be available for training - evenings or weekends? He suggested Tuesday and Thursday evenings. Saum: 2.5 hours per session maximum. Chris suggested that vendors could sponsor dinner. Saum said he has extra computer; the chapter would only have to purchase four. He stated that he would get back to us with a budget and specs. He also that we should not have classes in August, and he will speak to a USC Revit instructor. Barry Malaki founder of Westech College and American Educational Systems spoke about his Revit training program, 100 hours, funded by state unemployment taxes. He charges \$180 to the student or employer. Saum emphasized that ours was free, but only 4 weeks, 20-25 hours. Essentially an introduction. Chris offered Barry a few minutes to speak during the technical meeting. Chris asked Saum to review the Revit specs and requirements. Saum opined that the Costco \$1000 each computers are okay. Chris again asked Saum if he found any instructors, yet. Saum said he would start search in May (goal). Classes to be five weeks, 6 hours instruction each. Suggested we pay instructors twice (2X) normal salaries (1099).

Golf Tournament: Chris announced golf committee meeting next week, Friday 4/6. Sponsorships, no emails or other evidence of the number signed up.

Open floor, treasurer's report. Carl questioned whether the tabletop presentation should be before or after the dinner speaker. Ira favored after, and before the raffle. All agreed (without a vote). Jim asked if anyone was comparing the sign-in sheet head count to the hotel's meal count. Answer was yes, mostly. Membership discussion.

Carl announced upcoming speakers that have been scheduled. Suggested a tour for the July 25 meeting.

Saum: FYI, ASPE (national) approvals are essentially endorsements by Carol Johnson, the VP Legislative. Discussion followed.

Carl will email membership to determine who would be interested in Revit class. Chris suggested using the newsletter. Bob favored both.

Chris reminded us of deadline for newsletter articles. Roland to send reminders.

Saum recommended Ron George for technical presentation - Carl to contact.

vMeeting was adjourned at 5:11 PM.



Anne Yardley Caldwell

ayardley@elmcoduddy.com



Stainless Steel & Terrazzo
Plumbing Fixtures



Thermostatic Mixing Valves



Eyewashes, Eye/Face Washes
& Emergency Drench Showers



Vacuum Plumbing Systems for
Correctional, Commercial
Applications, Water Conservation
and Infection Prevention



Polypropylene (PP-R) Pipe for use in
pressurized plumbing and mechanical
systems of all sizes



Cast Iron, PVC, ABS, & CPVC Pipe &
Fittings for Plumbing
& Industrial Systems



Tankless/Instantaneous
Electric Water Heaters



Access Panels & Lead Roof Flashings,
Roof Access Hatches



Drainage Products & Trench Drains
& Oil/Water Separators



Low NOx Water Heaters & Boilers,
Hot Water Storage Tanks
& Solar Thermal Equipment



Bronze, Brass & Cast Iron, Gates,
Globes & Checks, Ball Valves, Cast
Iron Butterfly Valves & High Performance
Butterfly Valves



Couplings: No-Hub, No-Hub Heavy
Weight, Specialty, Flex-Seal, End Caps



Water Cooler, Traditional &
Contemporary Outdoor Drinking
Fountains, Bottle Fillers, Hydrants
& Hydration Station for
indoor/outdoor Application



Fire Protection Products:
Fire Extinguishers,
Hose & Valve Cabinets



Trap Primers, Water Hammer
Arrestors & Accessories



Packaged Pumping Systems



A KOHLER COMPANY

Digital Thermostatic Faucets &
Showers.



Sump, Effluent & Sewage Controls,
Engineered Customer Controls,
Embedded Controls, Ceramic
Filtration Solutions



Thermometers, Pressure Gauges
& Instruments



Stainless Steel Surgical Scrub Sinks,
Hospital, Patient Care Systems &
Behavioral Healthcare Products



Commissioning Agent CxA (San Marcos)

A forward-thinking, San Marcos-based company is seeking a commissioning agent (CxA) to join our team.

Axiom Commissioning Group, Inc. Started by mechanical engineers, Axiom Commissioning Group focuses solely on commissioning projects. Axiom is looking for experienced, like-minded candidates for an immediate position who are either ACG certified or interested in becoming an ACG certified commissioning authority. At **Axiom Commissioning Group, Inc.**, we believe our current and future success depends on hiring, developing, and retaining high caliber people. We invite you to learn more about us. Please view our website at www.axiomcx.com

Commissioning Agent CxA Qualifications & Requirements:

- 3-5 years' experience in mechanical building design, including commissioning projects design review, commissioning specifications, startup review and all testing
- Functional Performance Testing (FPT) and Performance Verification Testing (PVT), and final commissioning report composition
- Technically proficient in HVAC systems design, DDC control systems and lighting control systems
- EIT or PE certification helpful but not required
- Certification with ACG as a Commissioning Authority for military, commercial, and hospitality projects helpful but not required
- Excellent written and verbal communications and some travel (mostly in Southern California) is required.

We offer a stimulating and collaborative work environment with competitive salary & benefits and opportunities for advancement. We are proud to offer a variety of benefits including medical, dental, vision insurance, 401K match & much more.

Please send your resume, a cover letter, and your salary requirements to:

accounting@axiomcx.com



Ranked as one of the top engineering companies in San Diego by the San Diego Business Journal, T-Squared Professional Engineers, Inc. is a 24 year-old, privately held, industry-leading consulting engineering firm specializing in HVAC, Electrical, and Plumbing Systems Design as well as Photo-Voltaic Systems Design.

At **T-Squared Professional Engineers**, we believe our current and future success depends on hiring, developing, and retaining high caliber people. We are always interested in hearing from exceptional candidates, and we invite you to learn more about us. Please view our website at www.tsqeng.com.

Mechanical Designer/Engineer (Carlsbad/Vista)

Overview:

Immediate opening for a Mechanical Designer/Engineer to join our team.

The successful candidate will be professional, self-motivated, energetic, & enthusiastic with excellent communication and inter-personal skills, and a desire to contribute to our continued success. Previous consulting engineering firm experience required.

We value your experience including the following qualifications, technical skills, and abilities:

- Strong technical skills and the ability to produce accurate and timely HVAC systems designs for commercial, educational, health-care and military facilities
- Design and documentation skills
- The ability to develop layouts and detailed schematics for HVAC systems
- Expertise in piping and hydronic designs
- Comprehensive understanding of energy conservation reports
- Title - 24 calculation
- LEED design experience with a focus on energy efficiency and sustainability
- LEED documentation and coordination skills

Qualifications / Requirements:

- Bachelor's degree in Mechanical Engineering (or related industry experience) and a minimum of 4 years' experience in Mechanical design, or equivalent combination of education and experience
- Recent relevant experience in the engineering/construction field
- Experience in packaged equipment and central plants
- Knowledge of CA Energy Standards - Code Requirements
- EIT or PE certificates helpful but not required.
- LEED – AP preferred
- Team-player: Demonstrated ability to effectively manage a projects and/or take direction from project managers
- Proficiency with MS Office and CAD
- Strong verbal and writing communication skills

Plumbing Designer/Engineer (Carlsbad/Vista)

Overview:

Immediate opening for a Plumbing Designer to join our team.

The successful candidate will be professional, self-motivated, energetic & enthusiastic with excellent communication and inter-personal skills and a desire to contribute to our continued success. Previous consulting engineering firm experience required.

We Value Your Experience Including the Following Qualifications, Technical Skills & Abilities:

Design and assist with designing Plumbing Systems for commercial, educational, health-care and military facilities.

- Prepare detailed layouts for all drainage and water supply systems for all types of facilities, piping & hydronic designs
- Research & select equipment from various manufacturers
- Complete fixtures / equipment schedules
- Perform calculations for a project, such as equipment selection and sizing, fixtures calculations, product specifications, and design and layout for roof drains, sanitary lines, and water lines.
- Estimate construction costs and evaluate feasibility of construction
- Comprehensive understanding of Code Compliance
- Provide drafting support using AutoCAD and BIM to drafting staff

Qualifications & Requirements:

- A minimum 4 years of directly related experience in plumbing design or equivalent combination of education and experience.
- Recent relevant experience in the engineering/construction field
- Plumbing design from Schematic Design through Construction Administration
- Comprehensive knowledge of plumbing engineering fundamentals
- LEED – AP preferred
- Team-player: Demonstrated ability to effectively manage a projects and/or take direction from project managers
- Proficiency with MS Office and AutoCAD
- Strong verbal and writing communication skills

Be part of our team and design your success. We offer a stimulating and collaborative work environment with competitive salary & benefits and opportunities for advancement. We are proud to offer a variety of benefits including medical, dental, vision insurance, 401K match & much more.

Please send your resume, a cover letter, and your salary requirements to jobs@tsqeng.com

Please be sure to include the following in your cover letter:

- 1.) Why you are interested in this position,
- 2.) The special talents or strengths you will bring to our team and
- 3.) An example of a success that demonstrates your skills and abilities, for you are particularly proud.

Southern California



Christy's

Crispin
AIR RELEASE, CHECK AND BUTTERFLY VALVE
WWW.CRISPINVALVE.COM WWW.KFLOWVALVE.COM

Fernco

GreenTurtle

Guardian

IDEAL TRIDON.

LEONARD
WATER TEMPERATURE CONTROLS

MATCO-NORCA

METAL PRODUCTS COMPANY

OASIS

ROYAL
Building Products

WaterSaver

WILKINS

ZOELLER
PUMP COMPANY

ZURN
Engineered Water Solutions

ZURN PEX
PLUMBING SYSTEMS



1681 W. SECOND ST.
POMONA, CA 91766-1252

ERIC DECKER TEL. 626-797-9710
BUSINESS CELL. 909-762-0924
DEVELOPMENT FAX. 626-798-4659
GROUP EMAIL: EDECKER@DAWSONCO.COM

7044 CONVOY COURT
SAN DIEGO, CA 92111-1017



CENTRIFUGAL PUMPS, VARIABLE SPEED PUMPING SYSTEMS, VERTICAL TURBINE PUMPS, CIRCULATORS, PRESSURE BOOSTERS, SUBMERSIBLE PUMPS, HEAT TRANSFER EQUIPMENT, HYDRONIC SPECIALTIES, AIR CONTROL, BALANCE VALVES, ELECTRONIC CONTROL SYSTEMS, BLADDER, DIAPHRAGM & STANDARD COMPRESSION TANKS, WELL & WATER SYSTEM TANKS, THERMAL EXPANSION TANKS, SEWAGE, EFFLUENT & GRINDER PUMPS, LARGE NON-CLOG PUMPS, SELF PRIMERS & PACKAGED PUMPING SYSTEMS



G & L SERIES, WATER & MILD CORROSIVE PUMPS, 304 & 316 INVESTMENT CAST STAINLESS STEEL, END SUCTION, HORIZONTAL & VERTICAL MULTISTAGE, HIGH PRESSURE MULTI-STAGE WATER GUNS



RESIDENTIAL AND COMMERCIAL CONDENSING STAINLESS STEEL BOILERS AND WATER HEATERS, COPPER-FIN BOILERS AND WATER HEATERS, HEAT PUMP WATER HEATERS, STORAGE TANKS, HOT WATER GENERATOR SYSTEMS, BUFFER TANKS AND GAS FIRED POOL HEATERS.



PACKAGED INSTANTANEOUS & SEMI-INSTANTANEOUS INDIRECT WATER HEATERS, STEAM GENERATORS, ELECTRIC WATER HEATERS & BOILERS, CEMENT-LINED STORAGE TANKS, FLASH TANKS, BLOWDOWN TANKS, CONDENSATE COOLERS, TUBE BUNDLES



FLEXIBLE COUPLINGS, RUBBER AND METAL CONNECTORS, METRALOOP EXPANSION LOOPS, HYDRO-FORMED EXPANSION JOINTS, EXPANSION COMPENSATORS, PIPE ALIGNMENT GUIDE, WALL PENETRATIONS SEALS, BUTTERFLY VALVES, PIPELINE STRAINERS, FM AND UL RATINGS



CONDENSATE TRANSFER & BOILER FEED PUMPS, VACUUM PUMPS, CONTROL SYSTEMS



STEAM SPECIALTIES, TEMPERATURE & PRESSURE CONTROL VALVES, STEAM TRAPS, AUTOMATIC & MANUAL AIR VENTS, VACUUM BREAKERS, CONDENSATE & BOILER FEED PUMPS



BOILER SAFETY CONTROLS, LIQUID LEVEL CONTROLS, FLOW SWITCHES



MADE IN USA AND GSA CERTIFIED PRESSURE INDEPENDENT CONTROL VALVES, ACTUATED BALL VALVES, MANUAL BALANCE VALVES, AUTOMATIC BALANCE VALVES, COIL PIPING PACKAGES, HOSE KITS AND PIPING COMPONENTS & ACCESSORIES



ASME CERTIFIED AND NON-ASME CERTIFIED PRESSURE VESSELS



PACKAGED SYSTEMS FOR PUMPING AND HEAT TRANSFER APPLICATIONS

- BOILERMAG • MAGNETIC FILTERS FOR HEATING AND COOLING SYSTEMS
- CORCORAN • EXOTIC MATERIAL CENTRIFUGAL PUMPS
- DANFOSS • ZONE CONTROL PANELS, MIXING & ZONE VALVES, DIGITAL THERMOSTATS
- FLOW CONDITIONING CORP. • DOUBLE SUCTION DIFFUSERS, HYDRONIC INDICATORS
- HOLBY VALVE • TEMPERATURE REGULATING VALVES
- J.L. WINGERT • CHEMICAL FEEDERS, SEPARATORS
- PETERSON EQUIPMENT • PETE'S PLUG PRESSURE & TEMPERATURE TEST STATIONS
- REFRIGERATION RESEARCH • REFRIGERATION SUCTION ACCUMULATORS & RECEIVERS, HEAT EXCHANGERS, FILTER-DRIERS, MUFFLERS, SPECIALTIES
- SLANT FIN • SECTIONAL CAST IRON BOILERS, BASEBOARD RADIATION
- MILJOCO CORP. • GAUGES, THERMOMETERS

ASPE OC ADMINISTRATIVE SECRETARY REPORT

By Jim Weil, Administrative Secretary

ASPE OC Administrative Secretary Report General Meeting March 28, 2018

Called to order 7:02 PM by Chris MacKnight, President

Pledge of allegiance, led by Ira Schumer

Announcements:

- CPD review manuals are available at a discount.
- Saum Noor introduced four members taking the CPD exam next week.
- Chris: Board of Directors discussed preceding with the Revit classes. They will be on five consecutive Saturdays, six hours each, from 8am to 2pm. Vendors (affiliates) will sponsor food. Chapter will be purchasing computers and software. Four to five slots will be available; \$400 per student, up front. Provided the student attends all classes, and passes the test, the full tuition will be refunded. In addition, State-certified and funded classes are also available.
- John Zagorsky, golf tournament update: Will be held May 11th at Brookside, Pasadena. Volunteers needed for 6am check-in. Sponsorships, 21 so far, announced. Introduced golf committee members.

New member and guest introductions.

Self-introductions.

Technical Presentation:

Carl Ludwig introduced tonight's speaker, Paul Schwartz, PE, Chief Engineer of USC Foundation for Cross-Connection Control and Hydraulic Research. The topic: Backflow Protection – What the Plumbing Engineer Needs to Know. Questions from the audience and discussion followed. Carl presented the chapter Certificate of Appreciation.

Fines were levied by Sergeant at Arms John Zagorski:

- Aaron Coppersmith @ Southland \$2 for not being at a meeting in a long time
- Phil Fillers @ Pan Pacific Mechanical \$2 for not being at a meeting in a long time
- Abdalah Baker @ CRO Engineers \$2 for his new gig at CRO
- Kurt Bramstedt @ Rheem \$3 for a shameless plug for National ASPE
- Ron Stewart @ Elmco Duddy \$2 welcome to the meeting
- Sal & Layla Salehi @ Salehi Engineers \$1 each welcome to the meeting
- Eric Gomez @ P2S Engineers \$5 group rate fine for having 8 P2S people at the meeting
- Chris MacKnight \$5 for soliciting a bribe

18 The ASPE OC PRESS

- Joseph Lee @ O'Connor Sales \$2 welcome to the meeting
- Mike Lamaster @ Charlotte Pipe w/Seattle Chapter \$2 Seattle monies to OC

Tabletop: Linda Deunay of Enviro Products West (www.epwest.com), on Grease Guardian and Xerxes grease interceptors.


Announcements:

Barry Malaki founder of Westech College and American Educational Systems spoke about his Revit training program, 100 hours, funded by state unemployment taxes. He charges \$180 to the student or employer.

Raffle Prizes:

- Chris MacKnight started with his engineer-only prizes.
- Chris MacKnight, Custom H2O: several bottles of wine
- Barry Malaki, American Educational Systems: wine
- Mario Orlando, Spears: Easter egg
- Linda Deunay, Enviro Products West, wine (2)
- vJim Weil, Weil Aquatronics: wine
- Steve Komenda, Signature Sales: gift card
- Ira Schumer, Signature Sales: wine

Meeting adjourned at 8:34 PM



Stay connected with Viega
Secure, proven solutions
for joining pipe

viega.us

At Viega, we are an industry leader that is connected to our customers. Every day, we develop products that change the way engineers and mechanical contractors do business. It's our job to engineer forward-thinking products, including Viega MegaPress® and MegaPressG for black iron pipe, Viega ProPress® for copper and stainless steel, Viega PEX Press for potable and reclaimed water, as well as heating and cooling systems. Viega systems help you make product decisions that meet your qualifications and the end users' expectations. Choose Viega and help us bring press technology to the masses. **Viega. Connected in quality.**

viega



Alex Jimenez
 Cell: (909) 203-2008
 Office: (714) 888-2444
AJimenez@Delcosales.com
www.Delcosales.com

5375 E Hunter Avenue Anaheim, CA 92807



AB & I Foundry

Cast iron pipe, fittings and no-hub couplings.
www.abifoundry.com



Anaco Couplings

All stainless no-hub couplings.
www.anaco-husky.com



Commercial & Residential water heaters both gas & electric.
www.hotwater.com



Commercial & Residential water heaters both gas & electric.
www.americanwaterheater.com



Bemis / Church

Plastic, wood and soft seats for residential, Commercial and specialty applications
www.toiletseats.com



Brae

Rainwater harvesting. Complete systems designed to conserve water and help meet your sustainability objectives.
www.braewater.com



Eemax

Instantaneous, tank-less, electric water heaters
www.eemaxinc.com



Fox Environmental

Fox washdown units. Designed to divert all your Wash down water to waste while allowing rainwater to go to storm water.
www.foxenviro.com/au



Holdrite

The market leader in pipe support and alignment systems featuring Holdrite, Lockrite, Pexrite Quick strap, and HydroFlame
www.holdrite.com



Just Manufacturing

Stainless steel sinks for Commercial, residential and institutional applications
www.justmfg.com



Liberty Pumps

Sump, drain, effluent, sewage and grinder pumps and pump systems.
www.libertypumps.com



Metcraft Industries

Stainless Steel Plumbing Products for Correctional Market, Hospitals Schools
www.metcraftindustries.com



Washing Machine & Ice Maker boxes, Dearborn tubular, ADA Trap Covers
www.oatey.com



Commercial & Residential water heaters both gas & electric.
www.statewaterheaters.com



Tankless Commercial & Residential water heaters
www.takagi.com



Orion

No hub fittings for acid waste drainage systems. Rionfuse polypropylene fittings, neutralization tanks, corrosion resistant lab sinks.
www.orionfittings.com



Powers

Water tempering and process control specialists
www.powerscontrols.com



Sloan Valve

Manual and sensor operated flushometers, Faucets and vitreous china fixtures, hand dryers, SloanStone systems
www.sloanvalve.com



Watts Drainage / Blücher

Specification drains, floor sinks, interceptors, trench drains, carriers stainless steel drainage systems, floor drains, shower drains.
www.watts.com/drainage
www.blucherdrains.com



Watts Water Technologies

A complete line of water safety, and backflow prevention products. Regulators, automatic control valves, gate globe and check valves.
www.watts.com

REPRESENTING:

weil aquatronics

Engineered Pumps, Hydronic,
and Water Treatment Equipment



	<ul style="list-style-type: none"> ◆ Submersible, vertical, and dry pit sewage and sump pumps ◆ Condensate return, boiler feed, and circulating pumps ◆ Submersible and vertical grinder pumps, "Slicer" pumps, "Mover" pumps, "Scum Blaster" systems, prefabricated lift stations 												
	<ul style="list-style-type: none"> ◆ Submersible and dry pit non-clog sewage, effluent and wastewater pumps ◆ Grinder pumps, cutter pumps, jacketed pumps, and portable dewatering pumps ◆ High temperature and corrosion resistant pumps ◆ 10 GPM to over 10,000 GPM, 1/2 HP to over 500 HP Prefabricated lift stations 												
	<ul style="list-style-type: none"> ◆ UL- and ETL-listed packaged variable and constant speed pumping systems ◆ Domestic water, HVAC, irrigation, and fire pump packages ◆ Custom engineering and design capabilities ◆ Each system full factory-tested and warranted 												
	<ul style="list-style-type: none"> ◆ High performance self-priming and end suction centrifugal pumps ◆ Standard heavy-wall ductile iron volutes and 17-4 PH stainless steel shafts ◆ Shimless impeller adjustment and cartridge-type SC/TC mechanical seals 												
	<ul style="list-style-type: none"> ◆ Non-chemical water treatment using ozone technologies ◆ For cooling towers, lakes, fountains, aquariums, swimming pools and other open systems ◆ AquaPak™ EWS emergency water supply packages for critical facilities ◆ CleanStream™ cooling tower filtration packages 												
	<ul style="list-style-type: none"> ◆ Patented electroabsorptive technology for water purification and filtration ◆ Submicron particulate, pathogen, trace pharmaceutical, & cellular debris removal ◆ Much lower pressure drop, higher flow rates than comparable UF membranes ◆ Seromix Advanced Metals Removal System 												
	<ul style="list-style-type: none"> ◆ Packaged fire pump systems ◆ Inline, end suction and double suction circulating pumps ◆ Turbine, axial, and mixed flow pumps ◆ Vertical and horizontal multi-stage pumps 												
	<ul style="list-style-type: none"> ◆ PURAIN Self-Cleaning Pre-Filters for Rainwater Collection Systems ◆ AQUALOOP Graywater Treatment <ul style="list-style-type: none"> • 6 Log Reduction of Bacteria (99.9999%) and 99.7% Virus Removal • NSF 350 Certification ◆ DRAINMAX Tunnel Infiltration Products for On-Site Detention 												
	<ul style="list-style-type: none"> ◆ Pneumatic Ejectors ◆ Diaphragm Pumps ◆ Plunger Pumps 												
	<ul style="list-style-type: none"> ◆ Stainless steel vertical and horizontal multi-stage pumps ◆ Flows to 550 GPM, Heads to 1350 Ft., Temp to 285° F, Working Pressures to 600 PSI ◆ Cast AISI 304 or 316 stainless steel S/D casing ◆ NSF/ANSI 61 Annex G certified 												
	<table border="0"> <tbody> <tr> <td>◆ HVAC specialties</td> <td>◆ Air separators</td> <td>◆ Butterfly valves</td> </tr> <tr> <td>◆ Triple duty valves</td> <td>◆ Flex connectors</td> <td>◆ Heat exchangers</td> </tr> <tr> <td>◆ Suction diffusers</td> <td>◆ Strainers</td> <td>◆ Flow metering devices</td> </tr> <tr> <td>◆ Expansion tanks</td> <td>◆ Hydropneumatic tanks</td> <td>◆ ASME pressure vessels</td> </tr> </tbody> </table>	◆ HVAC specialties	◆ Air separators	◆ Butterfly valves	◆ Triple duty valves	◆ Flex connectors	◆ Heat exchangers	◆ Suction diffusers	◆ Strainers	◆ Flow metering devices	◆ Expansion tanks	◆ Hydropneumatic tanks	◆ ASME pressure vessels
◆ HVAC specialties	◆ Air separators	◆ Butterfly valves											
◆ Triple duty valves	◆ Flex connectors	◆ Heat exchangers											
◆ Suction diffusers	◆ Strainers	◆ Flow metering devices											
◆ Expansion tanks	◆ Hydropneumatic tanks	◆ ASME pressure vessels											
<h3>ACCESSORY LINES:</h3>	<ul style="list-style-type: none"> ◆ Control panels, alarms ◆ Custom fabricated steel covers and frames ◆ Fiberglass sump basins ◆ Elevator sumps, holding tanks, and alarms ◆ Level sensors 												

SERVING THE BUILDING TRADES SINCE 1962

115 E. Palmer Avenue, Unit C
Glendale, CA 91205-3186
www.weilaquatronics.com

Tel: 818.244.5582
Fax: 818.247.0083
info@weilaquatronics.com

CALL TOLL FREE:
800.74PUMPS
(800.747.8677)



info@enviroproductswest.com

SOUTHERN CALIFORNIA LINE CARD (888) 959-2937

ENVIRONMENTAL PRODUCTS



Xerxes

High Volume Fiberglass Grease Interceptor
Oil Water Separators & Storm Water Tanks



Grease Guardian

Point of Source Grease Removal Device



FogEnforcer

Ultra High Super Capacity Grease Interceptors

PUMPS, PUMP SYSTEMS & CONTROLS



Armstrong Fire Pumps



Ebara

FM Cast Iron & CSA Stainless Steel Pumps



Goulds Pumps

CSA Cast Iron & Stainless Steel Pumps



Landia

Cutter Pumps Submersible & Vertical Column



Tramco Pumps

Vertical Column Sump & Sewage Pumps



Topp Industries

Fiberglass Basins, Packaged Lift Stations



VC Systems

NSF/ANSI 61 & 372 Booster Systems

ACCESSORIES

U.L. LISTED CONTROL PANELS
FIBERGLASS BASINS
FABRICATED STEEL PRODUCTS

LEVEL CONTROLS & FLOATS
ELEVATOR ALARMS SYSTEMS
HYDRO-PNEUMATIC TANKS

Contact Us

ASPE Orange County
 179 S. Barbara Way, Anaheim, CA 92806
 Phone (714) 305-9015
 E-Mail chrismacknight857@msn.com
 Web www.aspeoc.com

2017 - 2018 ASPE OC CHAPTER BOARD MEMBERS

Board of Directors



Chris MacKnight
 President
 Custom H2O
 (714) 305-9015



Kurt Bramstedt
 Region 4 Affiliate Liaison
 Cast Iron Soil Pipe Institute
 (714) 331-1881



Saum Nour
 Vice President – Legislative
 Absolute Consulting Engineers
 (949) 852-8700



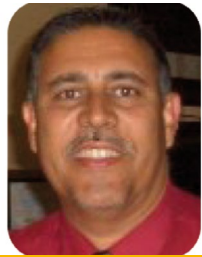
Alex Jimenez
 Vice President – Membership
 Delco Sales
 (909) 203-2008



Eric Decker
 AYP Liaison
 Dawson Company
 (909) 762-0924



Jim Weil
 Administrative Secretary
 Weil Aquatronics
 (714) 679-9514



Roland Gutierrez
 Corresponding Secretary
 Daybreak Technologies Inc.
 (714) 612-9076



Bob Woods
 Treasurer
 Raypak
 (818) 292-1538



Ira Schumer
 Affiliate Liaison
 Signature Sales
 (951) 691-0568



Carl Ludwig
 Vice President - Technical
 Ironwood Plumbing
 (714) 900-5885



In the next issue...