

Issue No. 16

July 2018

# *The ASPE* OC PRESS



## **President's Message**

*by Chris MacKnight*  
Page 2

## **ASPE Membership**

*American Society of Plumbing Engineers*  
*Membership Application*  
Page 5

## **Technical Report**

*by Carl P Ludwig - VP Technical*  
Page 9

# **PRESIDENT'S MESSAGE**

*By Chris MacKnight*

### **Hello All:**

Happy July to everyone. Our Technical Meeting this month will be a field trip to the Cla-Val company in Costa Mesa.

**VERY IMPORTANT. NOTE: This meeting will take place starting at 1 PM.**

LUNCH: (1pm)

Avila's El Ranchito

2101 Placentia Ave.

Costa Mesa, CA 92627

### Field Trip

Cla - Val

1701 Placentia Ave.

Costa Mesa, CA 92627

Since 1936, Cla-Val has been a leading manufacturer of automatic control valves, serving waterworks, fire protection, aviation ground fueling, marine and industrial customers throughout the world.

# PRESIDENT'S MESSAGE

**NOTE: BOTH THE LUNCH AND THE FIELD TRIP ARE FREE.  
ALSO NOTE THAT EVERY SPECIFYING PLUMBING ENGINEER  
IN ATTENDANCE WILL RECEIVE A RAFFLE PRIZE**

This should be a great trip with lots of information regarding the types of available valves for your projects.

**The 2018 ASPE Convention & Expo planning brochure is now available**

In our new brochure you will find information on all of the special events and technical education sessions that will be held during the 2018 ASPE Convention & Expo in Atlanta on September 28 - October 3. If you haven't registered yet, do so soon at [expo.aspe.org](http://expo.aspe.org) to take advantage of the early bird rate, which ends on August 28. We look forward to seeing you in Atlanta!

#### **Congratulations Chapter Award of Merit winners**

ASPE's annual Chapter Award of Merit is presented to recognize extraordinary contributions made by ASPE Chapters on behalf of the Society. This award embodies and recognizes the dynamic

volunteerism and leadership of our Chapters and is based on their accomplishments over the past year. This year, the following ASPE Chapters received the Chapter Award of Merit:

- Region 1: Baltimore, Boston, New York City, Philadelphia
- Region 2: Central Ohio, Cleveland, Eastern Michigan, Johnstown, Western Michigan, Southwestern Ohio
- Region 3: Alabama, Central Florida
- Region 4: Los Angeles, Orange County, Phoenix, San Francisco, Seattle
- Region 5: Central Texas, Dallas/Ft. Worth, Houston, Kansas City, Minnesota, Montreal, New York City, Oklahoma, Omaha, Wisconsin

Please contribute your ideas for meeting topics to Carl Ludwig ([carl@ironwoodplumbing.com](mailto:carl@ironwoodplumbing.com)). Remember there is a prize worth \$50 to anyone coming up first with an idea for a speaker that we use.

I look forward to seeing you all on July 25th.



**The Moffat Group**  
Michael E. Moffat, President

17747 Creciente Way, Suite 8  
San Diego, CA 92127-1056  
858-451-2196 Office/Fax  
858-245-2196 Mobile  
[tmg@san.rr.com](mailto:tmg@san.rr.com)  
[www.moffatgroup.com](http://www.moffatgroup.com)



**ASCO**  
**Firetrol**  
Fire Pump Controllers  
[www.firetrol.com](http://www.firetrol.com)



**ENVIRO**  
**PRODUCTS WEST**

2029 Verdugo Blvd. #236  
Montrose, CA 91020

**Linda Deunay**

[linda@enviroproductswest.com](mailto:linda@enviroproductswest.com)

o. 888.959.2937x101  
c. 818.687.6910  
f. 888.959.2973

[ENVIROPRODUCTSWEST.COM](http://ENVIROPRODUCTSWEST.COM)

## ADVERTISE IN THE ASPE ORANGE COUNTY NEWSLETTER!

- Support your business
- Great way to network with people in your industry
- Support your local ASPE chapter

LOCAL CHAPTERS ARE NOT ALLOWED TO SPEAK FOR THE SOCIETY!

### NEWSLETTER SPONSORSHIP AGREEMENT

Sponsor's Name: \_\_\_\_\_,

Address: \_\_\_\_\_,

Contact Person: \_\_\_\_\_ Phone No.: \_\_\_\_\_, \_\_\_\_\_

Type of sponsorship selected:

**( MONTHLY RATES )**

Business Card (\$25)  1/4" Page (\$40)  1/2 Page (\$75)  Full Page (\$115)

**( YEARLY RATES )**

Business Card (\$120) newsletter only  Business Card (\$200) includes Sponsor page link

1/4" Page (\$250)  1/2 Page (\$450)  Full Page (\$800)

Partial year sponsorship will be provided. Make checks payable to: **ASPE** at the above address. Sponsors must provide their own electronic artwork files (jpeg, gif, bmp etc..).

Sponsorship Signature: \_\_\_\_\_,

ASPE Signature: \_\_\_\_\_,



**Delta-Q Inc.**  
 1851 Dawns Way  
 Fullerton, CA 92831  
 714-879-0622...Fax 714-879-0623  
[www.deltaginc.com](http://www.deltaginc.com)

**Manufacturer's Representatives of Pumps, Plumbing, HVAC, Luxury**



Residential & Commercial High Quality  
 Pumps and Pumping Systems  
[www.us.grundfos.com](http://www.us.grundfos.com)



Complete Line of Faucets and Fixtures,  
 Residential and Commercial  
[www.americanstandard-us.com](http://www.americanstandard-us.com)



Bath & Ventilation Fans, Range Hoods, Fresh Air Systems,  
 Attic Ventilation, Trash Compactors  
[www.broan.com](http://www.broan.com)



Water Storage, Treatment, Heating,  
 Expansion, & Flow Control  
[www.amtrol.com](http://www.amtrol.com)



Full Line of Water Filtration System and  
 Filters, New and Replacement  
[www.falskenwatersystems.com](http://www.falskenwatersystems.com)



Bath & Ventilation Fans, Range Hoods, Intercom, Home  
 Automation, Central Vac, Door Chimes  
[www.nutone.com](http://www.nutone.com)



On Demand Hot Water  
 Systems and Pump  
 Controls

[www.gothotwater.com](http://www.gothotwater.com)



Water Soluble Flux, Tankless Clense Kits,  
 Non Toxic Drain Cleaner  
[www.deltaginc.com](http://www.deltaginc.com)



Gas Heating Equipment, Wholesale Only  
[www.cozyheaters.com](http://www.cozyheaters.com)



Sump, Sewage, Basins, Grinders and  
 Packaged Pump Systems  
[www.cranepumps.com/brands/Barnes.php](http://www.cranepumps.com/brands/Barnes.php)



Tubular, Angle Stops, Basket Strainers, ADA  
 Grab Bars, Master Kits  
[www.keeneymfg.com](http://www.keeneymfg.com)



Tankless Elec Hot Water Solutions, Space  
 Heating & Restroom Products  
[www.stiebel-eltron-usa.com](http://www.stiebel-eltron-usa.com)



Professional Torch Equipment  
[www.gossonline.com](http://www.gossonline.com)



Durable Shower Solutions including Bases,  
 Laundry Sinks, ADA Showers  
[www.fiatproducts.com](http://www.fiatproducts.com)



Radiant Heating and Cooling Systems  
[www.rehau.com/us-en/mechanical-and-plumbing](http://www.rehau.com/us-en/mechanical-and-plumbing)



Thermostatic Mixing Valves Tempered  
 Water Soutions  
[www.lawlervalue.com](http://www.lawlervalue.com)



Walk In Tubs for the Assisted Living Market  
[www.safetytubs.com](http://www.safetytubs.com)



Industrial Instrumentation, Pressure  
 Gauges, Thermometers  
[www.winters.com](http://www.winters.com)



Emergency Eyewash & Showering  
 Valves  
[www.tepid.com](http://www.tepid.com)



Food Waste Disposers, Insta Hot, Water  
 Chillers  
[www.mountainplumbing.com](http://www.mountainplumbing.com)

**MEMBERSHIP APPLICATION**  
(Please Print or Type)



**American Society of Plumbing Engineers**

6400 Shafer Court, Suite 350 | Rosemont, IL 60018  
(847) 296-0002 | Fax: (847) 296-2963 | www.aspe.org | aspehq@aspe.org

Chapter Use Only

H	
Q	
N	
O	
7	

Promo CODE: MBR2011

**INCOMPLETE APPLICATIONS WILL NOT BE PROCESSED.**

Mr.  Ms.  Miss  Mrs.

First Name \_\_\_\_\_ (Nickname) \_\_\_\_\_ Middle Name \_\_\_\_\_ Last Name \_\_\_\_\_

Birth Date: M \_\_\_ /D \_\_\_ /Y \_\_\_ Check all that apply:  P.E.  P. Eng  CPD  Graduate Engineer  LEED AP  CET  Other \_\_\_\_\_

I wish to affiliate with the \_\_\_\_\_ Chapter. Certification (P.E.) State \_\_\_\_\_ Certificate No. \_\_\_\_\_ Branch \_\_\_\_\_

Preferred Mailing Address  RESIDENCE  BUSINESS

RESIDENCE: Street Address \_\_\_\_\_ City \_\_\_\_\_ State \_\_\_\_\_ ZIP \_\_\_\_\_ Phone \_\_\_\_\_

E-mail (required) \_\_\_\_\_ Business E-mail \_\_\_\_\_ Cell Phone \_\_\_\_\_

BUSINESS: Organization Name \_\_\_\_\_ Your Title \_\_\_\_\_ Phone \_\_\_\_\_

Street Address \_\_\_\_\_ City \_\_\_\_\_ State \_\_\_\_\_ ZIP \_\_\_\_\_ Fax \_\_\_\_\_

Other organizations you are a member of:  ASHRAE  ASSE  NFPA  NSPE  ASME  PHCC  ICC  IAPMO  SFPE  Other \_\_\_\_\_

**EDUCATION**

	Name of Institution	Course or Major	From	To	Graduation Date	Degree/Diploma
High School						
College/University						
Technical School						
Others						

**PROFESSIONAL EXPERIENCE**

(This section must be completed as it affects membership grade classification. List chronologically, beginning with the present. Work description must be clear and concise: e.g., plumbing, piping, fire protection, HVAC, etc. Use additional sheet as necessary.)

Date(Mo/Yr)	Firm Name and Address	Class* (see below)	Title	Description of Work	Degree of Responsibility
From To					

\*Classification of Firm A - Arch./Engr. or Cons. Engr. B - Govt. Agency C - Mfr. or Mfr's. Rep. D - Educ. Inst. E - Contractor F - Other (Explain)

**REFERENCES**

(References should be in engineering profession. ASPE members preferred. ASPE reserves the right to contact references.)

Name	Address	Telephone

**PLUMBING ENGINEERING DESIGN HANDBOOK**

New members receive one of four volumes of the this definitive collection of general plumbing practices. As an ASPE member you will be sent the CD-rom unless you indicate preference for the softcover edition. If you would like both the CD-rom and softcover editions, please add \$50 to your total to the right.

CD-ROM  SOFTCOVER

**RENEWAL REMINDER**

I WOULD LIKE TO RECEIVE MEMBERSHIP RENEWAL REMINDERS AND SOCIETY RELATED IMPORTANT ANNOUNCEMENTS VIA TEXT MESSAGES.

**CERTIFICATION BY APPLICANT**

The undersigned certifies that all statements made herein are correct and, if elected to the Society, agrees to adhere to the Society's Bylaws and accept the Classification conferred by the Society. Upon becoming a member, the applicant will endeavor to advance the objectives of the Society and the plumbing engineering profession.

Signature of Applicant \_\_\_\_\_ Date \_\_\_\_\_

Sponsor \_\_\_\_\_ (Please Print)

How did you hear about ASPE?  Past Member  Plumbing Engineer Magazine  Colleague/Employer  ASPE App  Website  Other \_\_\_\_\_

American Society of Plumbing Engineers member dues are nonrefundable and not deductible as a charitable expense, but may be deductible as a business expense.

\* Contributions to ASPE Education (create education programs for membership) and Alfred Steele Scholarship (to award college scholarships) and PE Curriculum/Licensing (create future curriculum and licensing opportunities for membership) Funds are Strictly Voluntary and are not deductible as a charitable contribution but may be deductible as an ordinary and necessary business expense.

\*\* Contributions to the ASPE Research Foundation are Strictly Voluntary and are tax deductible as a charitable contribution.

© Copyright 2016 American Society of Plumbing Engineers. All Rights Reserved.

**REMIT MEMBERSHIP DUES WITH APPLICATION**

Member Type	Amount	Amount Due
<input type="checkbox"/> Full	\$190	\$ _____
<input type="checkbox"/> Associate	\$170	\$ _____
<input type="checkbox"/> Affiliate	\$190	\$ _____
<input type="checkbox"/> Special	\$190	\$ _____
<input type="checkbox"/> Governmental	\$190	\$ _____
<input type="checkbox"/> Student	\$30	\$ _____
<input type="checkbox"/> PEDH CD & Book	\$50	\$ _____
<input type="checkbox"/> ASPE Alfred Steele Scholarship Fund*	\$25	\$ _____
<input type="checkbox"/> ASPE Education Program Fund*	\$25	\$ _____
<input type="checkbox"/> PE Curriculum/Licensure Fund*	\$25	\$ _____
<input type="checkbox"/> ASPE Research Foundation**	\$25	\$ _____

**TOTAL AMOUNT DUE \$ \_\_\_\_\_**

**Payment Information:**

Enclosed is my check payable to ASPE.

Please charge my:  Visa, MasterCard  Discover

American Express

Card # \_\_\_\_\_

Exp Date: \_\_\_\_\_

Signature: \_\_\_\_\_

Date: \_\_\_\_\_ Telephone: \_\_\_\_\_

## Plumbing Design Engineer's : Orange County, San Diego and San Jose available positions at all levels.

We are looking for a team players! We are looking for a motivated, team-oriented, collaborative leader to support the growth of our fast-developing Plumbing team. This person would play a key plumbing engineering group and would be responsible for delivery of technical engineering work.

Key Responsibilities: The Plumbing Engineer is responsible for performing complex design calculations, sketches, technical comparisons and similar technical work as required by assignment. Designs complete systems (e.g. water hot and cold systems, waste and vent, storm dvrainage, natural gas, fuel oil, controls, medical gases) for low through mid-rise projects. In addition, the engineer calculates and understands impacting issues in Title-24 compliance.

### Typical Duties:

- Performs more complex design calculations, sketches, technical comparisons and similar technical work as required by assignment / direction by Project Manager.
- Performs coordination at a higher level by reviewing drawings supplied by vendors, other team engineers, and the architects and implements design modifications as necessary.
- Researches code issues as directed by the Project Manager.
- Researches design options and discuss findings with Project Managers.
- Proficiency in the use of 2D/3D software, including AutoCAD 2D, AutoCAD 3D, Revit, and Navisworks.
- Proficient computer skills with programs such as Word, Excel, PowerPoint, and Microsoft Project Experience performing site investigations of existing building system for renovation type projects.
- Visiting jobsites during construction phase and identifying and generally confirming the proper installation of designed systems and equipment.
- Communicating with and utilizing subordinates (e.g. CAD/BIM manual drafting and Design personnel) in the preparation and/or completion of design documents.
- Communicating with architects and other consultants regarding building systems and their impact on the system design.
- Communicating with building officials regarding code issues impacting system design.
- Begin to interact with clients as his or her level of experience progresses. May attend "kick-off" and design review meetings as directed by a Project Manager.
- Reviewing project budget cost and preparing opinions of probable construction costs.

### Qualifications: Bachelor's Degree in Engineering or Related field is preferred.

- 5 - 7 years of project experience in Plumbing design.
- Experience with AutoCAD and Revit is required.
- Knowledge of California Plumbing Code and related California Building Codes.
- Knowledge of green building practices and LEED Rating System.
- LEED AP Certification is desired.
- Experience with healthcare plumbing systems and life science projects are desirable. (OSHPD)

**Nancy Whitley**

**nwhitley@healthcaretalent.net**

**949-709-1883x 232**



**NewAge Casting**

Welcome to the New Age.

Certified by



# Welcome to the NewAge of Epoxy Soil Pipe

## APPLICATIONS

### Medical Facilities

Hospitals, Trauma Centers, Laboratories, Dialysis Clinics, Research Facilities

### Enhanced DWV

Kitchens, Bars, Soda Machines, Grease Interceptors, Waterless Urinals, High Efficiency, Casinos

### Destructive Elements & Environments

Maritime, Corrosive Soils, Rainwater, Boiler Rooms, Sustainable Buildings with waste volumes flowing from 20% to 50% less

### High Occupancy Structures

High Rises, Malls, Shopping Centers, Schools, Colleges, Universities, Arenas, Stadiums, Theatres, Convention Centers, Office Complexes

### Assisted Living Centers

Convalescent Homes, MOBs

## COST

A cost effective alternative to CPVC, acid waste, glass pipe, duriron, & stainless steel. We offer a solution to existing pipe materials, sizes & specifications.

## EPOXY COATING TESTING

1. Salt Spray
2. Chemical
3. High temperature waste testing
4. Temperature cycling testing
5. Flame resistant

## INSTALLATION

Standard installation practices

## PRODUCTS

No Hub from 1-1/2" to 15" & Couplings

## SPECIFICATION & STANDARDS

ASTM - A888

CISPI 301

ASTM 1277, 1540 & C564 - Regular & HD Couplings

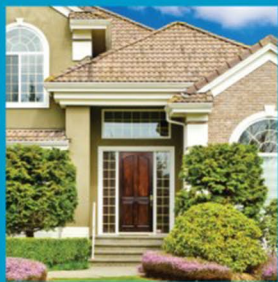
EN 877 Coating Specification & Testing



## For the life of the building.

12630 West Airport Blvd. • Suite 100  
Sugar Land, TX 77478 • Phone: (281)565-0928  
Fax: (281)565-0929 • Email: info@NewAgeCasting.com

**Toll Free: 1.866.791.7055 • NewAgeCasting.com**



## MORE INSIDE™ :: VALUE BEYOND OUR PIPING SOLUTIONS



For more than 50 years, The Lubrizol Corporation has been dedicated to providing quality resources with More Inside™ – helping you work more efficiently and effectively with all Lubrizol CPVC piping systems.

**ASPE-AUTHORIZED CEU COURSES:** Advance your expertise and improve your Certified Plumbing Design status.

**3D BIM OBJECTS:** Easily and accurately specify FlowGuard Gold® and Corzan® systems, the first CPVC systems available in BIM.

For your next project, specify Lubrizol CPVC systems, approved across California (including Los Angeles city), for use in residential and commercial applications.

**Learn more about all of our innovative products and services at [lubrizolcpvc.com](http://lubrizolcpvc.com) or contact Rob Zagorski at [rob.zagorski@lubrizol.com](mailto:rob.zagorski@lubrizol.com) or 562.857.0755.**

Follow us on Twitter at @LZ\_CPVC.



# TECHNICAL REPORT

*By Carl Ludwig, VP Technical*

Greetings,

Thank you to all who attended our last Technical Meeting on June 27th, 2018. We would like to thank Kelly Gilfoy who gave an excellent presentation on California Energy Code Requirements for Domestic Hot Water Systems.

Moving forward, we are extremely excited to announce that our next Technical Meeting will be on July 25th, 2018. We will be taking a field trip to Cla-Val located in Costa Mesa. Controlling water pressure is extremely important to plumbing system design and Cla-Val has components that make this possible. This will be an excellent opportunity to tour their facility and see how the components work and are made. All Plumbing Engineers and plumbing designers should attend this great event.

Please keep in mind, if anyone would like to reserve a tabletop presentation, please do not hesitate to let me, or anyone on the ASPE OC Board know. I can be reached via phone at 714-340-5114 or via e-mail at [AmericanDrafter@gmail.com](mailto:AmericanDrafter@gmail.com).

ASPEOC is still working towards the goal of our first Revit class. Chris MacKnight, our Chapter President and Dr. Saum Nour, PE, our Vice President Legislative have been working extremely hard to make this class a reality. We are excited about it and really looking forward to learning more about Revit. If you are interested in signing up, please let anyone on the ASPEOC Board know. Space is limited and the class will fill up quick, so be sure to sign up and reserve your seat.

Look forward to seeing everyone on July 25th, 2018.

# XERXES® GREASE INTERCEPTORS

IAPMO models to 30,000 gallons  
30 Year Warranty



2029 Verdugo Blvd., #236  
Montrose, CA 91020  
tel: 888.959.2937

[www.enviroproductswest.com](http://www.enviroproductswest.com)



YEARS OF EXCELLENCE



P2S Engineering is proud  
to support ASPE-OC

## JOIN OUR TEAM!

We are currently hiring engineers in our Long Beach and San Diego offices. For more information please visit our website at [p2seng.com](http://p2seng.com)

MECHANICAL | ELECTRICAL | PLUMBING  
TECHNOLOGY | COMMISSIONING | ENERGY

5000 East Spring Street, 8th Floor  
Long Beach, CA 90815

[www.p2seng.com](http://www.p2seng.com)



2029 Verdugo Blvd. #236  
Montrose, CA 91020

**John Deunay, CPD**

[john@enviroproductswest.com](mailto:john@enviroproductswest.com)

o. 888.959.2937 x302  
c. 818.687.6911  
f. 888.959.2973

[ENVIROPRODUCTSWEST.COM](http://ENVIROPRODUCTSWEST.COM)

DELCO  SALES

*Chris Nicosia*, CPMR  
CEO

5375 E. Hunter Avenue • Anaheim, CA 92807  
Phone: 714-888-2444 • Fax: 714-888-2448  
Cell: 714-273-5413 • [cnicosia@delcosales.com](mailto:cnicosia@delcosales.com)  
[www.delcosales.com](http://www.delcosales.com)

# Your Premier Providers of Life, Property and Asset Protection Solutions

## CLEAN AGENT FIRE SUPPRESSION

Our fire protection specialists bring you the finest in fire protection, including the most cost effective to the most environmentally green products available. Fike's **ECARO-25**® (using DuPont™ FE-25™ as the fire-extinguishing agent) is the best, most cost-effective clean agent system available. We offer a full line of leading-edge systems for a variety of applications:

- Cost-Effective Clean Agent Systems
- Green Inert Gas Systems
- Drop-in Halon Replacement
- In Cabinet / Small-Space Protection
- CO<sub>2</sub> Systems



## FIRE ALARM AND LIFE SAFETY

Our code-compliant fire alarm systems with specialty detection utilize high quality equipment from industry-leading manufacturers. We have extensive experience in projects from small commercial buildings, to large high-rise facilities, to sprawling industrial complexes. Our NICET certified sales team, designers, project managers, and technicians strive to exceed our client expectations.



- Addressable, Conventional, and Networked Fire Alarm Systems
- Voice Evacuation
- Linear Heat Detection
- Air Sampling
- Pre-action Sprinkler Detection & Control



## EMERGENCY POWER SHUTDOWN MANAGEMENT SYSTEM (EPSMS)

Fike's Emergency Power Shutdown Management System (EPSMS) is designed to consolidate and control equipment emergency power off in a timely, efficient and coordinated manner. EPSMS is used in many applications to:

- De-energize equipment during a fire
- Close fire dampers and turn off HVAC to contain fire and maintain proper concentration of fire suppressant
- Safely shutdown equipment during a flood or sprinkler system discharge
- Help protect fire department personnel from electrocution when fighting a fire



**Call today for your life safety evaluation.**



FACILITIES PROTECTION SYSTEMS

714-257-2244

www.fpsys.com



925-484-3701

www.gotoitsi.com

# ASPE OC ADMINISTRATIVE SECRETARY REPORT

*By Jim Weil, Administrative Secretary*

**ASPE OC Administrative Secretary Report  
Board of Directors Meeting June 27, 2018**

**Called to order by President Chris McKnight.**

**Present for the meeting: Chris MacKnight - President, Saum Noor - VP Legislative, Jim Weil - Administrative Secretary, and Carl Ludwig - VP Technical.**

First item of discussion was a joint meeting with ASHRAE in October, and who will be responsible for procuring a speaker.

**Revit Classes.** Chris asked Saum about the teacher search. Chris and Saum discussed a one-day free super basic session. Carl said he has someone in mind, willing to teach five weeks in a row, one time per week. Chris had two candidates turn down the position. Carl: Instructors' main complaint and concern is that five weeks is not sufficient, but it is hard to get students to commit to more than five weekly sessions. It takes 16 weeks to learn completely. Chris wanted a syllabus for the class - Saum said "no" - Chris told him to provide five week syllabus. Saum suggested Carl set up for the entire year.

**July Field Trip.** Carl proposed MWD Yorba Linda Treatment Plant, 1PM-3PM, 30 person maximum, or Cla-Val, Costa Mesa, four groups, 15 persons each, starting at 2:30 PM. Discussion. Voted 3-1 in favor of Cla-Val.

**ASPE Convention.** Saum stated that four board members must attend. Our chapter qualifies for five delegates. President, VP Technical, VP Legislative are going. VP Membership? Don Strickland, ASPE Region 4 Representative, joined discussion and remarked that the delegates do not have to be board members. It would be good for next year possible BOD candidates to be delegates.

Meeting was adjourned.



**Anne Yardley Caldwell**

[ayardley@elmcoduddy.com](mailto:ayardley@elmcoduddy.com)



Stainless Steel & Terrazzo  
Plumbing Fixtures



Thermostatic Mixing Valves



Eyewashes, Eye/Face Washes  
& Emergency Drench Showers



Vacuum Plumbing Systems for  
Correctional, Commercial  
Applications, Water Conservation  
and Infection Prevention



Polypropylene (PP-R) Pipe for use in  
pressurized plumbing and mechanical  
systems of all sizes



Cast Iron, PVC, ABS, & CPVC Pipe &  
Fittings for Plumbing  
& Industrial Systems



Tankless/Instantaneous  
Electric Water Heaters



Access Panels & Lead Roof Flashings,  
Roof Access Hatches



Drainage Products & Trench Drains  
& Oil/Water Separators



Low NOx Water Heaters & Boilers,  
Hot Water Storage Tanks  
& Solar Thermal Equipment



Bronze, Brass & Cast Iron, Gates,  
Globes & Checks, Ball Valves, Cast  
Iron Butterfly Valves & High Performance  
Butterfly Valves



Couplings: No-Hub, No-Hub Heavy  
Weight, Specialty, Flex-Seal, End Caps



Water Cooler, Traditional &  
Contemporary Outdoor Drinking  
Fountains, Bottle Fillers, Hydrants  
& Hydration Station for  
indoor/outdoor Application



Fire Protection Products:  
Fire Extinguishers,  
Hose & Valve Cabinets



Trap Primers, Water Hammer  
Arrestors & Accessories



Packaged Pumping Systems



A KOHLER COMPANY

Digital Thermostatic Faucets &  
Showers.



Sump, Effluent & Sewage Controls,  
Engineered Customer Controls,  
Embedded Controls, Ceramic  
Filtration Solutions



Thermometers, Pressure Gauges  
& Instruments



Stainless Steel Surgical Scrub Sinks,  
Hospital, Patient Care Systems &  
Behavioral Healthcare Products



**Commissioning Agent CxA (San Marcos)**

A forward-thinking, San Marcos-based company is seeking a commissioning agent (CxA) to join our team.

**Axiom Commissioning Group, Inc.** Started by mechanical engineers, Axiom Commissioning Group focuses solely on commissioning projects. Axiom is looking for experienced, like-minded candidates for an immediate position who are either ACG certified or interested in becoming an ACG certified commissioning authority. At **Axiom Commissioning Group, Inc.**, we believe our current and future success depends on hiring, developing, and retaining high caliber people. We invite you to learn more about us. Please view our website at [www.axiomcx.com](http://www.axiomcx.com)

**Commissioning Agent CxA Qualifications & Requirements:**

- 3-5 years' experience in mechanical building design, including commissioning projects design review, commissioning specifications, startup review and all testing
- Functional Performance Testing (FPT) and Performance Verification Testing (PVT), and final commissioning report composition
- Technically proficient in HVAC systems design, DDC control systems and lighting control systems
- EIT or PE certification helpful but not required
- Certification with ACG as a Commissioning Authority for military, commercial, and hospitality projects helpful but not required
- Excellent written and verbal communications and some travel (mostly in Southern California) is required.

We offer a stimulating and collaborative work environment with competitive salary & benefits and opportunities for advancement. We are proud to offer a variety of benefits including medical, dental, vision insurance, 401K match & much more.

**Please send your resume, a cover letter, and your salary requirements to:**

[accounting@axiomcx.com](mailto:accounting@axiomcx.com)



Ranked as one of the top engineering companies in San Diego by the San Diego Business Journal, T-Squared Professional Engineers, Inc. is a 24 year-old, privately held, industry-leading consulting engineering firm specializing in HVAC, Electrical, and Plumbing Systems Design as well as Photo-Voltaic Systems Design.

At **T-Squared Professional Engineers**, we believe our current and future success depends on hiring, developing, and retaining high caliber people. We are always interested in hearing from exceptional candidates, and we invite you to learn more about us. Please view our website at [www.tsqeng.com](http://www.tsqeng.com).

**Mechanical Designer/Engineer (Carlsbad/Vista)**

**Overview:**

**Immediate opening for a Mechanical Designer/Engineer to join our team.**

The successful candidate will be professional, self-motivated, energetic, & enthusiastic with excellent communication and inter-personal skills, and a desire to contribute to our continued success. Previous consulting engineering firm experience required.

**We value your experience including the following qualifications, technical skills, and abilities:**

- Strong technical skills and the ability to produce accurate and timely HVAC systems designs for commercial, educational, health-care and military facilities
- Design and documentation skills
- The ability to develop layouts and detailed schematics for HVAC systems
- Expertise in piping and hydronic designs
- Comprehensive understanding of energy conservation reports
- Title - 24 calculation
- LEED design experience with a focus on energy efficiency and sustainability
- LEED documentation and coordination skills

**Qualifications / Requirements:**

- Bachelor's degree in Mechanical Engineering (or related industry experience) and a minimum of 4 years' experience in Mechanical design, or equivalent combination of education and experience
- Recent relevant experience in the engineering/construction field
- Experience in packaged equipment and central plants
- Knowledge of CA Energy Standards - Code Requirements
- EIT or PE certificates helpful but not required.
- LEED – AP preferred
- Team-player: Demonstrated ability to effectively manage a projects and/or take direction from project managers
- Proficiency with MS Office and CAD
- Strong verbal and writing communication skills

**Plumbing Designer/Engineer (Carlsbad/Vista)**

**Overview:**

**Immediate opening for a Plumbing Designer to join our team.**

The successful candidate will be professional, self-motivated, energetic & enthusiastic with excellent communication and inter-personal skills and a desire to contribute to our continued success. Previous consulting engineering firm experience required.

**We Value Your Experience Including the Following Qualifications, Technical Skills & Abilities:**

Design and assist with designing Plumbing Systems for commercial, educational, health-care and military facilities.

- Prepare detailed layouts for all drainage and water supply systems for all types of facilities, piping & hydronic designs
- Research & select equipment from various manufacturers
- Complete fixtures / equipment schedules
- Perform calculations for a project, such as equipment selection and sizing, fixtures calculations, product specifications, and design and layout for roof drains, sanitary lines, and water lines.
- Estimate construction costs and evaluate feasibility of construction
- Comprehensive understanding of Code Compliance
- Provide drafting support using AutoCAD and BIM to drafting staff

**Qualifications & Requirements:**

- A minimum 4 years of directly related experience in plumbing design or equivalent combination of education and experience.
- Recent relevant experience in the engineering/construction field
- Plumbing design from Schematic Design through Construction Administration
- Comprehensive knowledge of plumbing engineering fundamentals
- LEED – AP preferred
- Team-player: Demonstrated ability to effectively manage a projects and/or take direction from project managers
- Proficiency with MS Office and AutoCAD
- Strong verbal and writing communication skills

Be part of our team and design your success. We offer a stimulating and collaborative work environment with competitive salary & benefits and opportunities for advancement. We are proud to offer a variety of benefits including medical, dental, vision insurance, 401K match & much more.

**Please send your resume, a cover letter, and your salary requirements to [jobs@tsqeng.com](mailto:jobs@tsqeng.com)**

Please be sure to include the following in your cover letter:

- 1.) Why you are interested in this position,
- 2.) The special talents or strengths you will bring to our team and
- 3.) An example of a success that demonstrates your skills and abilities, for you are particularly proud.

Southern California



**Christy's**

**Crispin**  
AIR RELEASE, CHECK AND BUTTERFLY VALVE  
WWW.CRISPINVALVE.COM WWW.KAFLOWVALVE.COM

**Fernco**

**GreenTurtle**

**Guardian**

**IDEAL TRIDON.**

**LEONARD**  
WATER TEMPERATURE CONTROLS

**MATCO-NORCA**

**METAL PRODUCTS COMPANY**

**OASIS**

**ROYAL**  
Building Products

**WaterSaver**

**WILKINS**

**ZOELLER**  
PUMP COMPANY

**ZURN**  
Engineered Water Solutions

**ZURN PEX**  
PLUMBING SYSTEMS



1681 W. SECOND ST.  
POMONA, CA 91766-1252

**ERIC DECKER** TEL. 626-797-9710  
BUSINESS CELL. 909-762-0924  
DEVELOPMENT FAX. 626-798-4659  
GROUP EMAIL: EDECKER@DAWSONCO.COM

7044 CONVOY COURT  
SAN DIEGO, CA 92111-1017



CENTRIFUGAL PUMPS, VARIABLE SPEED PUMPING SYSTEMS, VERTICAL TURBINE PUMPS, CIRCULATORS, PRESSURE BOOSTERS, SUBMERSIBLE PUMPS, HEAT TRANSFER EQUIPMENT, HYDRONIC SPECIALTIES, AIR CONTROL, BALANCE VALVES, ELECTRONIC CONTROL SYSTEMS, BLADDER, DIAPHRAGM & STANDARD COMPRESSION TANKS, WELL & WATER SYSTEM TANKS, THERMAL EXPANSION TANKS, SEWAGE, EFFLUENT & GRINDER PUMPS, LARGE NON-CLOG PUMPS, SELF PRIMERS & PACKAGED PUMPING SYSTEMS



G & L SERIES, WATER & MILD CORROSIVE PUMPS, 304 & 316 INVESTMENT CAST STAINLESS STEEL, END SUCTION, HORIZONTAL & VERTICAL MULTISTAGE, HIGH PRESSURE MULTI-STAGE WATER GUNS



RESIDENTIAL AND COMMERCIAL CONDENSING STAINLESS STEEL BOILERS AND WATER HEATERS, COPPER-FIN BOILERS AND WATER HEATERS, HEAT PUMP WATER HEATERS, STORAGE TANKS, HOT WATER GENERATOR SYSTEMS, BUFFER TANKS AND GAS FIRED POOL HEATERS.



PACKAGED INSTANTANEOUS & SEMI-INSTANTANEOUS INDIRECT WATER HEATERS, STEAM GENERATORS, ELECTRIC WATER HEATERS & BOILERS, CEMENT-LINED STORAGE TANKS, FLASH TANKS, BLOWDOWN TANKS, CONDENSATE COOLERS, TUBE BUNDLES



FLEXIBLE COUPLINGS, RUBBER AND METAL CONNECTORS, METRALOOP EXPANSION LOOPS, HYDRO-FORMED EXPANSION JOINTS, EXPANSION COMPENSATORS, PIPE ALIGNMENT GUIDE, WALL PENETRATIONS SEALS, BUTTERFLY VALVES, PIPELINE STRAINERS, FM AND UL RATINGS



CONDENSATE TRANSFER & BOILER FEED PUMPS, VACUUM PUMPS, CONTROL SYSTEMS



STEAM SPECIALTIES, TEMPERATURE & PRESSURE CONTROL VALVES, STEAM TRAPS, AUTOMATIC & MANUAL AIR VENTS, VACUUM BREAKERS, CONDENSATE & BOILER FEED PUMPS



BOILER SAFETY CONTROLS, LIQUID LEVEL CONTROLS, FLOW SWITCHES



MADE IN USA AND GSA CERTIFIED PRESSURE INDEPENDENT CONTROL VALVES, ACTUATED BALL VALVES, MANUAL BALANCE VALVES, AUTOMATIC BALANCE VALVES, COIL PIPING PACKAGES, HOSE KITS AND PIPING COMPONENTS & ACCESSORIES



ASME CERTIFIED AND NON-ASME CERTIFIED PRESSURE VESSELS



PACKAGED SYSTEMS FOR PUMPING AND HEAT TRANSFER APPLICATIONS

- BOILERMAG • MAGNETIC FILTERS FOR HEATING AND COOLING SYSTEMS
- CORCORAN • EXOTIC MATERIAL CENTRIFUGAL PUMPS
- DANFOSS • ZONE CONTROL PANELS, MIXING & ZONE VALVES, DIGITAL THERMOSTATS
- FLOW CONDITIONING CORP. • DOUBLE SUCTION DIFFUSERS, HYDRONIC INDICATORS
- HOLBY VALVE • TEMPERATURE REGULATING VALVES
- J.L. WINGERT • CHEMICAL FEEDERS, SEPARATORS
- PETERSON EQUIPMENT • PETE'S PLUG PRESSURE & TEMPERATURE TEST STATIONS
- REFRIGERATION RESEARCH • REFRIGERATION SUCTION ACCUMULATORS & RECEIVERS, HEAT EXCHANGERS, FILTER-DRIERS, MUFFLERS, SPECIALTIES
- SLANT FIN • SECTIONAL CAST IRON BOILERS, BASEBOARD RADIATION
- MILJOCO CORP. • GAUGES, THERMOMETERS

# ASPE OC ADMINISTRATIVE SECRETARY REPORT

*By Jim Weil, Administrative Secretary*

**ASPE OC Administrative Secretary Report  
General Meeting June 27, 2018**

**Called to order 7:12 PM by Chris MacKnight, President  
Pledge of allegiance, led by Don Strickland**

**Recognition of Past Presidents:**

- Saum Noor
- Andrew Cole
- Don Strickland

**New member and guest introductions.**

**Self-introductions.**

**Announcements:**

- Carl Ludwig: Still working on finding an instructor for the Revit classes. It will be five sessions, Saturdays, at Absolute Consulting Engineers in Newport Beach. Computers have been purchased. The \$400 tuition will be refunded if student attends all five sessions and passes exam.
- We will have four board members and one member as delegates to the ASPE convention in Atlanta

**Technical Presentation:**

Carl Ludwig introduced tonight's speaker, in a continuation of the Hot Water series, Kelly Gilfoy of Spec Sales.

Topic: California Code Requirements for Domestic Hot Water (DHW) Systems.

Saum Noor announced that he would package the series material at the end, for distribution to the members.

Questions from the audience and discussion followed.

Carl presented the chapter Certificate of Appreciation.

**Tabletop:**

Rick Mayo, TACO ([www.tacocomfort.com](http://www.tacocomfort.com))

**Announcement:**

Carl: July meeting will be a field trip to Cla-Val, Costa Mesa, July 25 approximately 2-2:30PM.

**Fines were levied by Sergeant at Arms John Zagorski:**


- Andrew Cole @ TK1SC introduced himself as not with P2S was fined \$5 which included the 6 total attendees from TK1SC

## 18 The ASPE OC PRESS

- Kelly Gilfoy @ Spec Sales was fined \$3 for introducing himself as being with P2S
- Anne Yardley was fined \$2 for flaunting her raffle gift at the bar prior to the meeting
- Eric Gomez @ P2S was fine \$3 which included the 5 total attendees from P2S
- Everett Yang & Jonathan Pak @ Trek Engineering were both fined \$1 as a welcome to the meeting
- Todd Stephens @ The Brown Co was fined \$1 for not being at the meeting for a long time
- Victor Muro @ City of Irvine was fined \$1 as ASPE needs money back from the City
- Ken Moody @ Asahi was fined \$2 which was \$1 for each 6 pac of Asahi beer he brought to raffle off
- Rick Neal @ Taco was fined \$2 for not signing in and having the tabletop presentation

### Raffle Prizes, donated by:

- Ken Moody, Asahi America
- Ann Yardley, Elmco Duddy
- Mario Orlando, Spears
- Jim Weil, Weil Aquatronics
- Steve Komenda, Signature Sales
- Chris MacKnight, Custom H2O (engineer-only prizes)



Stay connected with Viega  
Secure, proven solutions  
for joining pipe

viega.us

At Viega, we are an industry leader that is connected to our customers. Every day, we develop products that change the way engineers and mechanical contractors do business. It's our job to engineer forward-thinking products, including Viega MegaPress® and MegaPressG for black iron pipe, Viega ProPress® for copper and stainless steel, Viega PEX Press for potable and reclaimed water, as well as heating and cooling systems. Viega systems help you make product decisions that meet your qualifications and the end users' expectations. Choose Viega and help us bring press technology to the masses. **Viega. Connected in quality.**

viega



**Alex Jimenez**  
 Cell: (909) 203-2008  
 Office: (714) 888-2444  
[AJimenez@Delcosales.com](mailto:AJimenez@Delcosales.com)  
[www.Delcosales.com](http://www.Delcosales.com)

5375 E Hunter Avenue Anaheim, CA 92807



**AB & I Foundry**

Cast iron pipe, fittings and no-hub couplings.  
[www.abifoundry.com](http://www.abifoundry.com)



**Anaco Couplings**

All stainless no-hub couplings.  
[www.anaco-husky.com](http://www.anaco-husky.com)



Commercial & Residential water heaters both gas & electric.  
[www.hotwater.com](http://www.hotwater.com)



Commercial & Residential water heaters both gas & electric.  
[www.americanwaterheater.com](http://www.americanwaterheater.com)



**Bemis / Church**

Plastic, wood and soft seats for residential, Commercial and specialty applications  
[www.toiletseats.com](http://www.toiletseats.com)



**Brae**

Rainwater harvesting. Complete systems designed to conserve water and help meet your sustainability objectives.  
[www.braewater.com](http://www.braewater.com)



**Eemax**

Instantaneous, tank-less, electric water heaters  
[www.eemaxinc.com](http://www.eemaxinc.com)



**Fox Environmental**

Fox washdown units. Designed to divert all your Wash down water to waste while allowing rainwater to go to storm water.  
[www.foxenviro.com/au](http://www.foxenviro.com/au)



**Holdrite**

The market leader in pipe support and alignment systems featuring Holdrite, Lockrite, Pexrite Quick strap, and HydroFlame  
[www.holdrite.com](http://www.holdrite.com)



**Just Manufacturing**

Stainless steel sinks for Commercial, residential and institutional applications  
[www.justmfg.com](http://www.justmfg.com)



**Liberty Pumps**

Sump, drain, effluent, sewage and grinder pumps and pump systems.  
[www.libertypumps.com](http://www.libertypumps.com)



**Metcraft Industries**

Stainless Steel Plumbing Products for Correctional Market, Hospitals Schools  
[www.metcraftindustries.com](http://www.metcraftindustries.com)



Washing Machine & Ice Maker boxes, Dearborn tubular, ADA Trap Covers  
[www.oatey.com](http://www.oatey.com)



Commercial & Residential water heaters both gas & electric.  
[www.statewaterheaters.com](http://www.statewaterheaters.com)



Tankless Commercial & Residential water heaters  
[www.takagi.com](http://www.takagi.com)



**Orion**

No hub fittings for acid waste drainage systems. Rionfuse polypropylene fittings, neutralization tanks, corrosion resistant lab sinks.  
[www.orionfittings.com](http://www.orionfittings.com)



**Powers**

Water tempering and process control specialists  
[www.powerscontrols.com](http://www.powerscontrols.com)



**Sloan Valve**

Manual and sensor operated flushometers, Faucets and vitreous china fixtures, hand dryers, SloanStone systems  
[www.sloanvalve.com](http://www.sloanvalve.com)



**Watts Drainage / Blücher**

Specification drains, floor sinks, interceptors, trench drains, carriers stainless steel drainage systems, floor drains, shower drains.  
[www.watts.com/drainage](http://www.watts.com/drainage)  
[www.blucherdrains.com](http://www.blucherdrains.com)



**Watts Water Technologies**

A complete line of water safety, and backflow prevention products. Regulators, automatic control valves, gate globe and check valves.  
[www.watts.com](http://www.watts.com)

# REPRESENTING:

## weil aquatronics

Engineered Pumps, Hydronic,  
and Water Treatment Equipment



	<ul style="list-style-type: none"> <li>◆ Submersible, vertical, and dry pit sewage and sump pumps</li> <li>◆ Condensate return, boiler feed, and circulating pumps</li> <li>◆ Submersible and vertical grinder pumps, "Slicer" pumps, "Mover" pumps, "Scum Blaster" systems, prefabricated lift stations</li> </ul>												
	<ul style="list-style-type: none"> <li>◆ Submersible and dry pit non-clog sewage, effluent and wastewater pumps</li> <li>◆ Grinder pumps, cutter pumps, jacketed pumps, and portable dewatering pumps</li> <li>◆ High temperature and corrosion resistant pumps</li> <li>◆ 10 GPM to over 10,000 GPM, 1/2 HP to over 500 HP Prefabricated lift stations</li> </ul>												
	<ul style="list-style-type: none"> <li>◆ UL- and ETL-listed packaged variable and constant speed pumping systems</li> <li>◆ Domestic water, HVAC, irrigation, and fire pump packages</li> <li>◆ Custom engineering and design capabilities</li> <li>◆ Each system full factory-tested and warranted</li> </ul>												
	<ul style="list-style-type: none"> <li>◆ High performance self-priming and end suction centrifugal pumps</li> <li>◆ Standard heavy-wall ductile iron volutes and 17-4 PH stainless steel shafts</li> <li>◆ Shimless impeller adjustment and cartridge-type SC/TC mechanical seals</li> </ul>												
	<ul style="list-style-type: none"> <li>◆ Non-chemical water treatment using ozone technologies</li> <li>◆ For cooling towers, lakes, fountains, aquariums, swimming pools and other open systems</li> <li>◆ AquaPak™ EWS emergency water supply packages for critical facilities</li> <li>◆ CleanStream™ cooling tower filtration packages</li> </ul>												
	<ul style="list-style-type: none"> <li>◆ Patented electroabsorptive technology for water purification and filtration</li> <li>◆ Submicron particulate, pathogen, trace pharmaceutical, &amp; cellular debris removal</li> <li>◆ Much lower pressure drop, higher flow rates than comparable UF membranes</li> <li>◆ Seromix Advanced Metals Removal System</li> </ul>												
	<ul style="list-style-type: none"> <li>◆ Packaged fire pump systems</li> <li>◆ Inline, end suction and double suction circulating pumps</li> <li>◆ Turbine, axial, and mixed flow pumps</li> <li>◆ Vertical and horizontal multi-stage pumps</li> </ul>												
	<ul style="list-style-type: none"> <li>◆ PURAIN Self-Cleaning Pre-Filters for Rainwater Collection Systems</li> <li>◆ AQUALOOP Graywater Treatment                             <ul style="list-style-type: none"> <li>• 6 Log Reduction of Bacteria (99.9999%) and 99.7% Virus Removal</li> <li>• NSF 350 Certification</li> </ul> </li> <li>◆ DRAINMAX Tunnel Infiltration Products for On-Site Detention</li> </ul>												
	<ul style="list-style-type: none"> <li>◆ Pneumatic Ejectors</li> <li>◆ Diaphragm Pumps</li> <li>◆ Plunger Pumps</li> </ul>												
	<ul style="list-style-type: none"> <li>◆ Stainless steel vertical and horizontal multi-stage pumps</li> <li>◆ Flows to 550 GPM, Heads to 1350 Ft., Temp to 285° F, Working Pressures to 600 PSI</li> <li>◆ Cast AISI 304 or 316 stainless steel S/D casing</li> <li>◆ NSF/ANSI 61 Annex G certified</li> </ul>												
	<table border="0"> <tbody> <tr> <td>◆ HVAC specialties</td> <td>◆ Air separators</td> <td>◆ Butterfly valves</td> </tr> <tr> <td>◆ Triple duty valves</td> <td>◆ Flex connectors</td> <td>◆ Heat exchangers</td> </tr> <tr> <td>◆ Suction diffusers</td> <td>◆ Strainers</td> <td>◆ Flow metering devices</td> </tr> <tr> <td>◆ Expansion tanks</td> <td>◆ Hydropneumatic tanks</td> <td>◆ ASME pressure vessels</td> </tr> </tbody> </table>	◆ HVAC specialties	◆ Air separators	◆ Butterfly valves	◆ Triple duty valves	◆ Flex connectors	◆ Heat exchangers	◆ Suction diffusers	◆ Strainers	◆ Flow metering devices	◆ Expansion tanks	◆ Hydropneumatic tanks	◆ ASME pressure vessels
◆ HVAC specialties	◆ Air separators	◆ Butterfly valves											
◆ Triple duty valves	◆ Flex connectors	◆ Heat exchangers											
◆ Suction diffusers	◆ Strainers	◆ Flow metering devices											
◆ Expansion tanks	◆ Hydropneumatic tanks	◆ ASME pressure vessels											
<h3>ACCESSORY LINES:</h3>	<ul style="list-style-type: none"> <li>◆ Control panels, alarms</li> <li>◆ Custom fabricated steel covers and frames</li> <li>◆ Fiberglass sump basins</li> <li>◆ Elevator sumps, holding tanks, and alarms</li> <li>◆ Level sensors</li> </ul>												

SERVING THE BUILDING TRADES SINCE 1962

115 E. Palmer Avenue, Unit C  
Glendale, CA 91205-3186  
[www.weilaquatronics.com](http://www.weilaquatronics.com)

Tel: 818.244.5582  
Fax: 818.247.0083  
[info@weilaquatronics.com](mailto:info@weilaquatronics.com)

CALL TOLL FREE:  
**800.74PUMPS**  
**(800.747.8677)**



info@enviroproductswest.com

## SOUTHERN CALIFORNIA LINE CARD (888) 959-2937

### ENVIRONMENTAL PRODUCTS



#### Xerxes

High Volume Fiberglass Grease Interceptor  
Oil Water Separators & Storm Water Tanks



#### Grease Guardian

Point of Source Grease Removal Device



#### FogEnforcer

Ultra High Super Capacity Grease Interceptors

### PUMPS, PUMP SYSTEMS & CONTROLS



#### Armstrong Fire Pumps



#### Ebara

FM Cast Iron & CSA Stainless Steel Pumps



#### Goulds Pumps

CSA Cast Iron & Stainless Steel Pumps



#### Landia

Cutter Pumps Submersible & Vertical Column



#### Tramco Pumps

Vertical Column Sump & Sewage Pumps



#### Topp Industries

Fiberglass Basins, Packaged Lift Stations



#### VC Systems

NSF/ANSI 61 & 372 Booster Systems

#### ACCESSORIES

U.L. LISTED CONTROL PANELS  
FIBERGLASS BASINS  
FABRICATED STEEL PRODUCTS

LEVEL CONTROLS & FLOATS  
ELEVATOR ALARMS SYSTEMS  
HYDRO-PNEUMATIC TANKS

**Contact Us**

ASPE Orange County  
 179 S. Barbara Way, Anaheim, CA 92806  
 Phone (714) 305-9015  
 E-Mail chrismacknight857@msn.com  
 Web www.aspeoc.com

# 2017 - 2018 ASPE OC CHAPTER BOARD MEMBERS

## Board of Directors



**Chris MacKnight**  
 President  
 Custom H2O  
 (714) 305-9015



**Kurt Bramstedt**  
 Region 4 Affiliate Liaison  
 Cast Iron Soil Pipe Institute  
 (714) 331-1881



**Saum Nour**  
 Vice President – Legislative  
 Absolute Consulting Engineers  
 (949) 852-8700



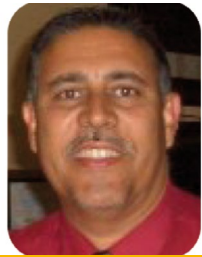
**Alex Jimenez**  
 Vice President – Membership  
 Delco Sales  
 (909) 203-2008



**Eric Decker**  
 AYP Liaison  
 Dawson Company  
 (909) 762-0924



**Jim Weil**  
 Administrative Secretary  
 Weil Aquatronics  
 (714) 679-9514



**Roland Gutierrez**  
 Corresponding Secretary  
 Daybreak Technologies Inc.  
 (714) 612-9076



**Bob Woods**  
 Treasurer  
 Raypak  
 (818) 292-1538



**Ira Schumer**  
 Affiliate Liaison  
 Signature Sales  
 (951) 691-0568



**Carl Ludwig**  
 Vice President - Technical  
 Ironwood Plumbing  
 (714) 900-5885



In the next issue...